

B312A/B315A

12"/15" 2-Way Active DSP PA Speaker

- High-power 400-Watt 2-way PA sound reinforcement speaker system for live and playback applications
- Ultra-compact lightweight system delivers excellent sound even at extreme sound pressure levels
- Integrated sound processor for ultimate system control and speaker protection
- Extremely powerful 12"/15" long-excursion driver provides incredibly deep bass and acoustic power
- State-of-the-art 1.75" titanium-diaphragm compression driver for exceptional high-frequency reproduction
- Ultra-wide dispersion and large format exponential/conical horn with multi-cell aperture throat
- Ultra-low noise Mic/Line input with Volume control and Clip LED
- Dedicated 2-band EQ for perfect sound adjustment
- Additional Line output allows linking of additional speaker systems
- Versatile trapezoidal enclosure design allows different positioning:
 - Stand mounting with 35-mm pole socket
 - Tilts on its side for use as a floor monitor
- Ergonomically shaped handles for easy carrying and setup
- High-quality components and exceptionally rugged construction ensure long life
- Conceived and designed by BEHRINGER Germany

behringer.com

Loudspeakers / Sound Reinforcement

EUROLIVE — Processor-Controlled 400-Watt 2-Way PA Speaker System with 12"/15" Woofer and 1.75" Titanium Compression Driver



Finally, active loudspeakers that sound as good at the gig as they did in the store!

In a world where PA systems are typically huge, heavy and expensive, the EUROLIVE B312A and B315A loudspeaker systems stand head and shoulders above the crowd. Thanks to its high-efficiency design, the B315A cranks four hundred of the cleanest, punchiest audio Watts you've ever heard from a compact loudspeaker system. The integrated sound processor provides total system control, along with dependable protection of the LF transducer and 1.75" titanium-diaphragm compression driver. In addition, the both models features an Ultra-Low Noise (ULN) Mic/Line input with LEVEL control and a dedicated 2-band EQ (bass/treble tone control) for easy control. And both the B312A and the B315A are extremely affordable!

No need for racks of amps and external processing gear

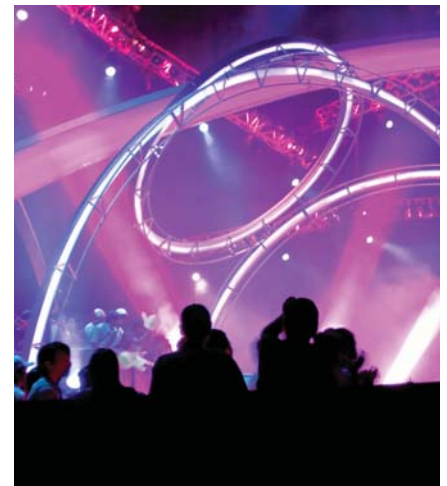
Without a doubt, one of the coolest things about powered loudspeakers is the lack of back-breaking racks of amps, crossovers and EQs that are often required to make passive speaker systems sound good.

Hiding inside each B312A/B315A

enclosure is the equivalent of a 2-way electronic crossover, a graphic equalizer, a parametric equalizer, a mic preamp and two power amplifiers! They all work together and don't need adjustments or a degree in sound engineering.

And more about those power amplifiers. They're perfectly matched to the loudspeaker's woofer and tweeter...so there's no risk of either over- or under-powering your speakers, which can lead to catastrophic failure of the entire system. Since all the electronics onboard have been designed and

Continued on next page



B312A/B315A

12"/15" 2-Way Active DSP PA Speaker

optimized to work as a total, high-performance system, you never have to worry.

Instant PA system

With just a single B312A or B315A loudspeaker system and a microphone or MP3 player, you can set up an instant sound system. Thanks to the built-in preamp section, you just connect a dynamic mic and raise and lower the volume with the Level control. Plug in your sound source, place the speaker on a tabletop or stand, and power up. It's just that easy. And if you need more coverage, you can chain together as many as you like via the convenient Line Out XLR connector.

Stereo music system

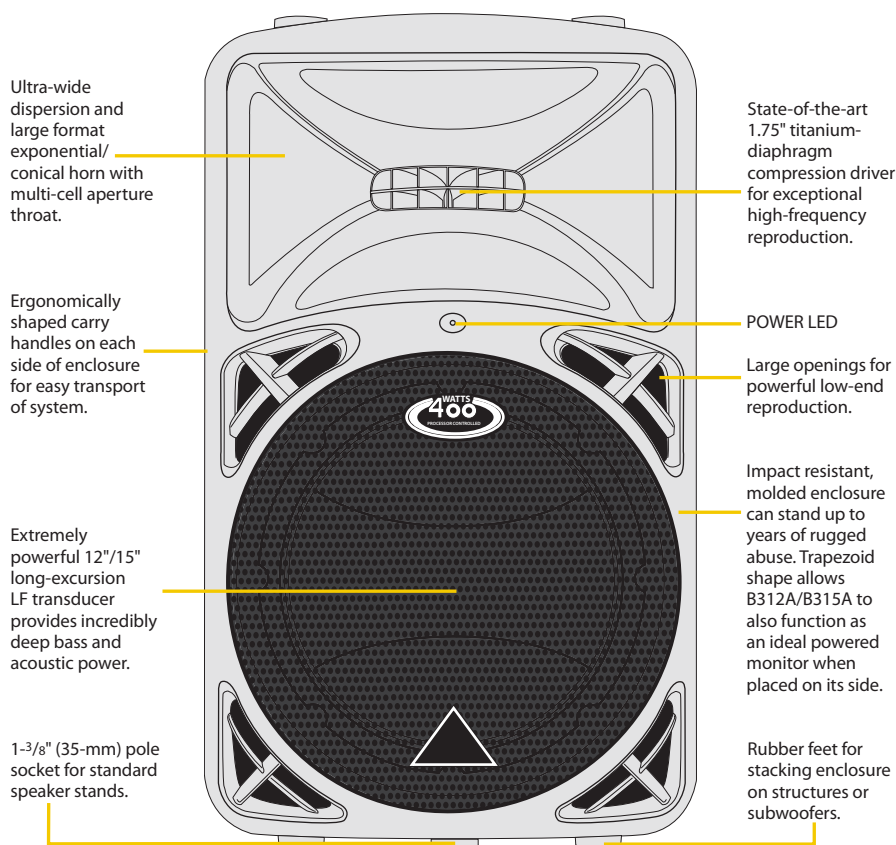
You can even use two the B312A or B315A enclosures for stereo playback of your MP3, CD or old-skool cassette deck without any additional hardware. Just plug the appropriate stereo "breakout" adapter* into your deck's output jack and run the cables to the 1/4" inputs on each loudspeaker. Set the Level and EQ controls the same on both enclosures. Voilà, instant party!

Marvelous monitoring

Thanks to their trapezoidal design, both of these cabinets can be laid on their side providing the ideal angle for onstage monitor wedge applications. With onboard amplifiers and dual-band EQ, the B312A and B315A merge high-fidelity performance with portability. Hookup is simple, requiring only a single XLR or 1/4" cable from the monitor send on the mixing console and, of course, power. Additional monitors can be chained together via the XLR LINK OUT jack on the rear panel.

Low frequency response

The EUROLIVE Series was built with extended low frequency handling in mind. With a tuned port, internally-braced, injection molded enclosure, each model's custom-designed LF transducer (woofer) really cranks out tight, room-shaking low end. So, if deep, solid bass is what you're after, you can count on both the B312A and the B315A to deliver loads of it at lease-breaking volumes.



Accurate non-fatiguing midrange and treble.

Even if your particular application doesn't include booming bass, you'll love the sheer accuracy of these loudspeakers. Over a year of design went into a exponential/conical horn/multi-cell aperture throat horn/titanium dome compression driver combination that could do justice to loud hard rock or dance music — yet could also

satisfy audiophiles with its musical timbre and attention to detail. For spoken word, singing or acoustical instruments, they are un-matched for being able to articulate complex harmonic details. In fact, many customers think it's the most natural-sounding speaker they've ever heard at anywhere near the price.

Massive power to size ratio

Cutting-edge technology and high-fidelity speakers are not all it takes to

Continued on next page



B312A/B315A

12"/15" 2-Way Active DSP PA Speaker

get your message across — you need power, and lots of it. At the heart of the B312A and B315A are two high-current amplifiers with a total output of 400 watts. They're capable of driving the speakers to their maximum without the slightest hint of distortion — and without speaker damage due to active internal protection circuits. Put simply, they will astound you with their massive punch, smooth mids and articulate top-end!!

Custom-designed transducers

Let's face it; the transducers (woofers and tweeters) are the only part of a sound system you actually hear, so we don't cut any corners. While some of our competitors are content to buy off-the-shelf transducers and plug them into their boxes, we custom-design and build our transducers from scratch. Not only do we wind our own voice coils, we process the paper pulp into cones and even machine our own backplates. This enables us to control the quality, and frankly, make better components, like the long-excursion LF transducers and state-of-the-art 1.75" titanium drivers we deploy in each and every EUROLIVE enclosure.



B312A or B315A?

As you've probably noticed, we make these active loudspeakers in two woofer sizes. Which one is right for your application?

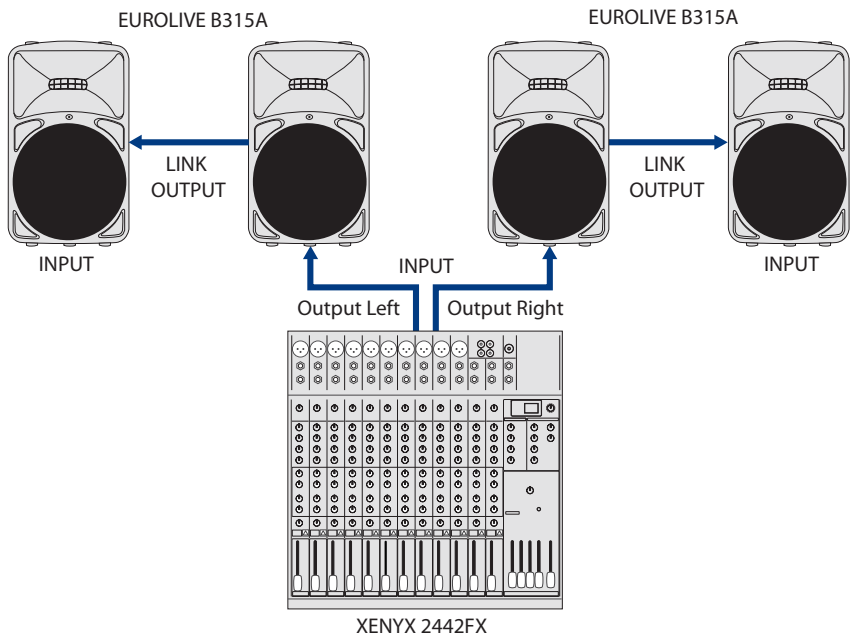
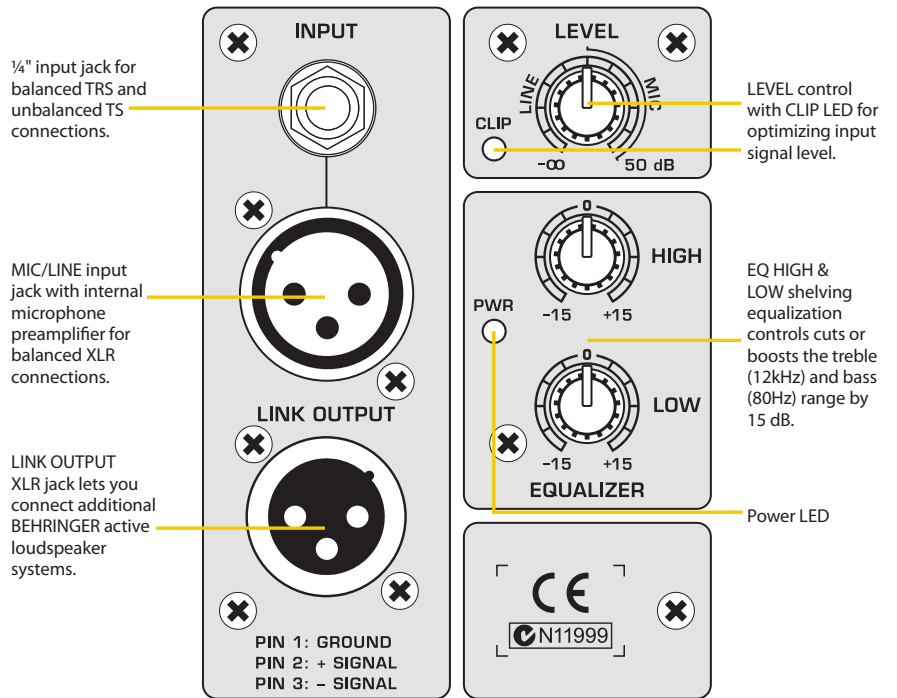
Well, let's start with your application. Is it spoken word in a hotel ballroom? Hard rock in a park? A folk singer or a drum 'n' bass DJ? Loud enough for an 18-year old or loud enough for your grandmother? A huge auditorium or a tiny club?

First, let's get one thing established:

both models put out plenty of bass. But physics are physics and a 15" low frequency transducer has almost 40% more surface area with which to move air than a 12". So the easiest answer is "Whether to choose the B312A or B315A depends on your bass requirements."

If you're amplifying a sales presentation with a single mic or an acoustic guitar, the B312A should be all the speaker you need in most rooms. If your music has more bass in

Continued on next page



B312A/B315A**12"/15" 2-Way
Active DSP
PA Speaker**

it — or you want to crank it up louder, then the B315A may be your choice. Up to a point...

"Bass requirements" isn't quite as easy an answer as it sounds. The larger a room's cubic volume, the more energy is required to achieve any given desired level of bass. In other words, when playing the same tune in a big room versus a small room, big room

= less bass; small room = more bass. Confused yet?

We suggest that you consult your BEHRINGER dealer for more advice on this subject — which is also a good time to do a listening test of both the B315A and B312A. Against their competition and against each other. Judge for yourself. And then own BEHRINGER with money to spare.

OUTPUT POWER**Low-frequency range**

RMS @ 1% THD 200 W @ 8 Ω

Peak power 300 W @ 8 Ω

High-frequency range

RMS @ 1% THD 50 W @ 8 Ω

Peak power 80 W @ 8 Ω

INPUT**XLR connector (servo-balanced)**

Sensitivity -40 to +4 dBu

Input impedance 20 kΩ

¼" jack (servo-balanced)

Sensitivity -40 to +4 dBu

Input impedance 20 kΩ

LINK OUTPUT

XLR connector

LOUDSPEAKER SYSTEM DATA**B312A:**

Frequency range 65 Hz to 20 kHz

Crossover frequency 2.4 kHz (12 dB)

Maximum SPL 125 dB @ 1 m

Limiter Optical

Dynamic Equalizer Processor-controlled

B315A:

Frequency range 55 Hz to 20 kHz

Crossover frequency 1.9 kHz (12 dB)

Maximum SPL 126 dB @ 1 m

Limiter Optical

Dynamic Equalizer Processor-controlled

EQUALIZER

HIGH 12 kHz / ±15 dB

LOW 80 Hz / ±15 dB

POWER SUPPLY

Power consumption 450 W maximum

Mains voltage / Fuse

100 - 120 V~ (50/60 Hz) T 5.0 A H 250 V

220 - 240 V~ (50/60 Hz) T 2.5 A H 250 V

Mains connector Standard IEC receptacle

PHYSICAL/WEIGHT**B312A:**

Dimensions (H x W x D) approx. 25.9" x 15.5" x 15.1"
(658 mm x 394 mm x 384 mm)

Weight approx. 53.4 lbs (24.2 kg)

B315A:

Dimensions (H x W x D) approx. 28.8" x 18.5" x 16.7"
(732 mm x 470 mm x 424 mm)

Weight approx. 61.8 lbs (28.0 kg)

BEHRINGER is constantly striving to maintain the highest professional standards. As a result of these efforts, modifications may be made from time to time to existing products without prior notice. Specifications and appearance may differ from those listed or illustrated.

For service, support or more information contact the BEHRINGER location nearest you:

BEHRINGER Australia tel.: +61 3 9877 7170, fax: +61 3 9877 7870 **BEHRINGER Germany** tel.: +49 2154 9206 4149, fax: +49 2154 9206 4199 **BEHRINGER Japan** tel.: +81 3 5281 1180, fax: +81 3 5281 1181 **BEHRINGER Singapore** tel.: +65 5845 1800, fax: +65 6214 0275 **BEHRINGER USA / CANADA** tel.: +1 425 672 0816, fax: +1 425 673 7647

behringer.com

